

LINDY®

CONNECTION PERFECTION

Wi-Fi Repeater

Quick Installation Guide

English



LINDY No. 52061

www.lindy.com

CE



Configuring the Wi-Fi Repeater

You can configure your repeater using the Rj-45 cable or wirelessly. We suggest you use the cable included.

Configuring with a cable / wirelessly

Plug the Wi-Fi repeater in to a wall socket and switch on.

Cabled - connect your computer/laptop to the repeater using the RJ-45 cable enclosed.

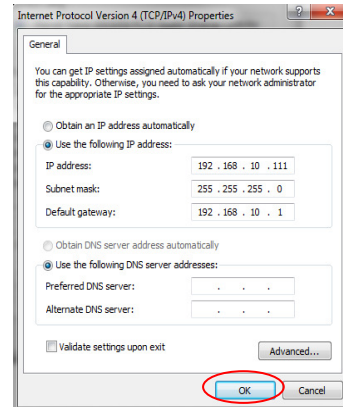
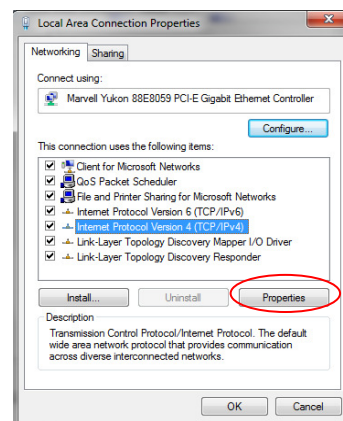
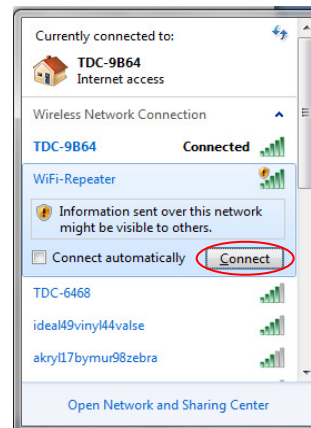
Wireless - Click on the network icon  or  in the taskbar on your desktop. Select the Wi-Fi Repeater and click "Connect".

In the "Control Panel" go to "View network status and tasks", then click "Manage network connections". Right click "Local area network", and then select "Properties". In the next window, highlight "Internet protocol version 4 (TCP/IPv4)" and then click "Properties".

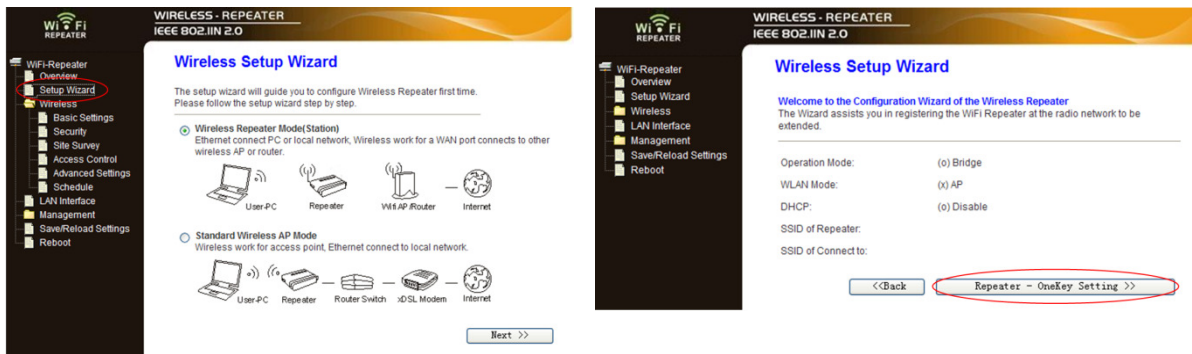
To set the IP address manually, select "Use the following IP address" then manually type "IP address" 192.168.10.x (x is any number from 2 to 254). Then manually type "Subnet mask" 255.255.255.0. Type the routers LAN IP address in the "Default gateway" box.

Open a web browser and type <http://192.168.10.1> in the browsers address box. This is the default IP address for this device.

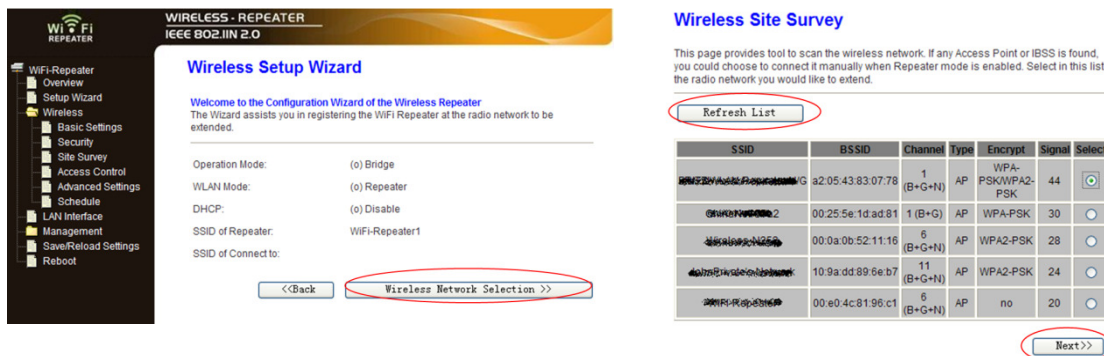
The login screen will appear, enter the username "admin" and the password "admin" in to the appropriate fields and click OK.



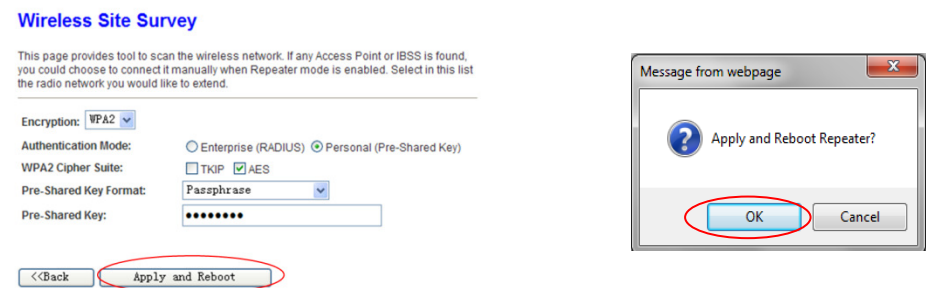
When you have successfully logged in, select “Setup wizard”. You will then be able to select one of two options, choose “Wireless repeater mode” and click next to continue. Then click on “Repeater – Onekey setting”



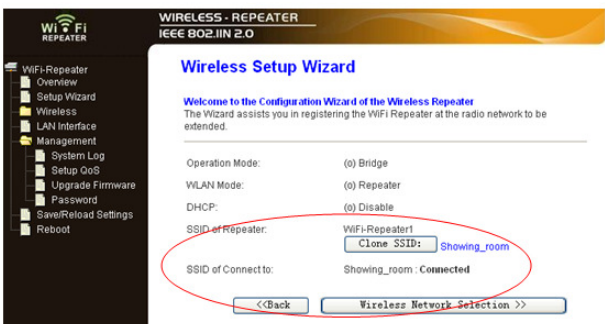
Wait a few seconds and when the box below appears, click on “Wireless network selection”. On the next screen click “Refresh List” and select the SSID you wish to connect too. Click next to continue.



On the next screen, do not change any of the settings; just insert the password of your network. Then click on “Apply and reboot”. Click “OK” to confirm, the repeater will reboot.



Wait for 30 seconds and when you log back into the repeater the “Clone SSID” will show the same name as your router. Your Wi-Fi Repeater is now ready for use.



Please visit the LINDY website to view a more detailed manual for this product.

LINDY Electronics Ltd.
Sadler Forster Way
Teesside Industrial Estate
Thornaby, Stockton-on-Tees
TS17 9JY, England

Declaration of Conformity

LINDY Part Number: 52016

Description: Wi-Fi Repeater

We, LINDY Electronics LTD, hereby declare that the above product is in conformity with the EU Directive 2004/108/EC (Electromagnetic Compatibility), and 1999/5/EC R&TTE (Radio and Telecommunications Terminal Equipment).

The following standards were used to evaluate the product for electromagnetic compatibility:

Standard Number

ETSI EN 300 328 V1.7.1 (2006-10)

EN 62311:2008

ETSI EN 301 489-1 V1.8.1 (2008-04)

ETSI EN 301 489-17 V2.1.1 (2009-05)

EN 55022/A1:2007

EN 61000-3-2/A2:2009

EN 61000-3-3:2008

EN 55024/A2:2003

Date: 20 December 2011

Signature:



Name: Darren N. Casey

Position: Managing Director, LINDY Electronics LTD

LINDY Supplier Office Reference: 31st October 2011



EG - Konformitätserklärung (EC - Declaration of Conformity)

Für das/die folgend bezeichnete/n Produkt/e

LINDY WLAN 11n Repeater
Art.-Nr.: 52061

wird hiermit bestätigt, dass es den Anforderungen entspricht, die in den **EU Richtlinien 1999/5/EG (R&TTE)** und **2004/108/EG (elektromagnetische Verträglichkeit)** festgelegt sind. und **2006/95/EC (Niederspannungsrichtlinie)**, ersetzend für 73/23/EWG, festgelegt sind. Diese Erklärung gilt für alle Exemplare der o.g. Artikelnummer/n.

Zur Beurteilung des Produktes wurden folgende Normen herangezogen:

ETSI EN 300 328 V1.7.1 (2006-10)
ETSI EN 301 893 V1.5.1 (2008-12)
EN 62311:2008
ETSI EN 301 489-1 V1.8.1 (2008-04)
ETSI EN 301 489-17 V2.1.1 (2009-05)
EN 55022 /A1:2007
EN 55024 /A2:2003
EN 61000-3-2 /A2:2009
EN61000-3-3:2008
EN 55013:2001 +A1:2003 +A2:2006
EN 55020:2007
EN 60950-1: 2006 + A11:2009

Diese Erklärung wird verantwortlich für LINDY-Elektronik GmbH
abgegeben durch

Jürgen Lindenberg
Geschäftsführer

Mannheim 14. Dez. 2011


.....

Ref. LINDY S-Office:

www.lindy.de



CE/FCC & Recycling Information

CE Certification

This equipment complies with the requirements relating to Electromagnetic Compatibility Standards EN55022/EN55024 and the further Standards cited therein.

FCC Certification

This equipment has been tested and found to comply with the limits for a Class B digital device, pursuant to part 15 of the FCC Rules. These limits are designed to provide reasonable protection against harmful interference in a residential installation. You are cautioned that changes or modification not expressly approved by the party responsible for compliance could void your authority to operate the equipment.

This device complies with part 15 of the FCC Rules.

Operation is subject to the following two conditions:

1. This device may not cause harmful interference, and
2. This device must accept any interference received, including interference that may cause undesired operation.



WEEE (Waste of Electrical and Electronic Equipment), Recycling of Electronic Products

In 2006 the European Union introduced regulations (WEEE) for the collection and recycling of all waste electrical and electronic equipment. It is no longer allowable to simply throw away electrical and electronic equipment. Instead, these products must enter the recycling process.

Each individual EU member state has implemented the WEEE regulations into national law in slightly different ways. Please follow your national law when you want to dispose of any electrical or electronic products. More details can be obtained from your national WEEE recycling agency.

Germany

Die Europäische Union hat mit der WEEE Richtlinie umfassende Regelungen für die Verschrottung und das Recycling von Elektro- und Elektronikprodukten geschaffen. Diese wurden von der Bundesregierung im Elektro- und Elektronikgerätegesetz – ElektroG in deutsches Recht umgesetzt. Dieses Gesetz verbietet vom 24. März 2006 an das Entsorgen von entsprechenden, auch alten, Elektro- und Elektronikgeräten über die Hausmülltonne! Diese Geräte müssen den lokalen Sammelsystemen bzw. örtlichen Sammelstellen zugeführt werden! Dort werden sie kostenlos entgegen genommen. Die Kosten für den weiteren Recyclingprozess übernimmt die Gesamtheit der Gerätehersteller.

France

En 2006, l'union Européenne a introduit la nouvelle réglementation (DEEE) pour le recyclage de tout équipement électrique et électronique.

Chaque Etat membre de l' Union Européenne a mis en application la nouvelle réglementation DEEE de manières légèrement différentes. Veuillez suivre le décret d'application correspondant à l'élimination des déchets électriques ou électroniques de votre pays.

Italy

Nel 2006 l'unione europea ha introdotto regolamentazioni (WEEE) per la raccolta e il riciclo di apparecchi elettrici ed elettronici. Non è più consentito semplicemente gettare queste apparecchiature, devono essere riciclate. Ogni stato membro dell' EU ha tramutato le direttive WEEE in leggi statali in varie misure. Fare riferimento alle leggi del proprio Stato quando si dispone di un apparecchio elettrico o elettronico.

Per ulteriori dettagli fare riferimento alla direttiva WEEE sul riciclaggio del proprio Stato.

LINDY No. 52061

1st Edition November 2011



www.lindy.com